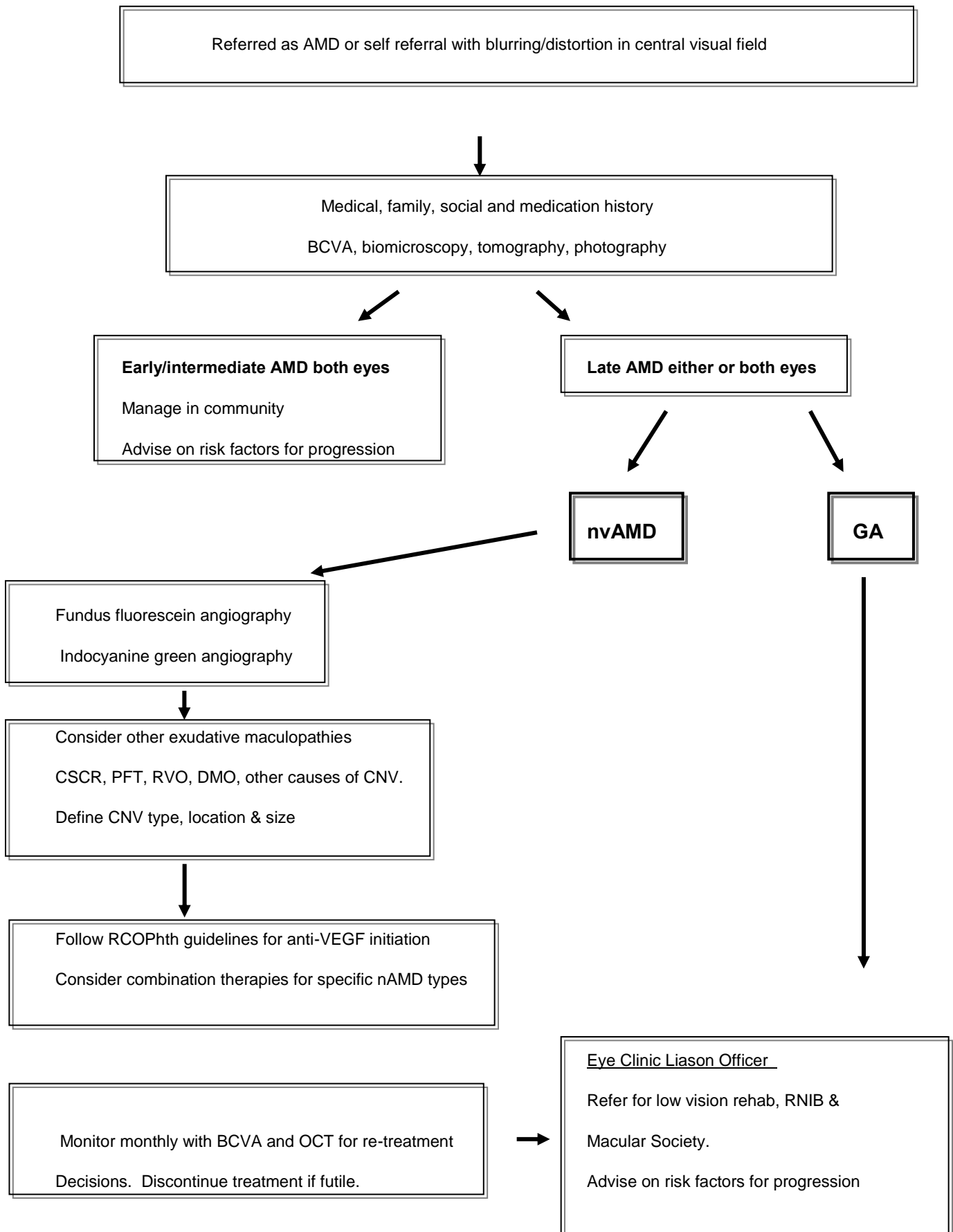


# RCOPhth AMD Guidelines 2013 - Management algorithm for age-related macular degeneration



Management algorithm for age-related macular degeneration.

Key. OCT = optical coherence tomography. AMD = age-related macular degeneration. nvAMD = neovascular age-related macular degeneration ("wet AMD"). GA = geographic atrophy ("dry AMD"). CSCR = central serous chorioretinopathy. PFT = perifoveal telangiectasia. RVO = retinal vein occlusion. DMO = diabetic macular oedema. CNV = choroidal neovascularisation. VEGF = vascular endothelial growth factor. RCO = Royal College of Ophthalmologists.